

# Everything you need.



AND A FEW YOU'VE ALWAYS WANTED.

## Facilities

- 12/7 (12 hours per day, 7 days per week) concierge provides security, parcel collection and key management
- Residents-only fully equipped gym with commercial-grade cardio equipment located on ground level
- Private lounge located on the ground floor for Wonderland residents
- Rooftop terrace with BBQ on Level 9, exclusively for Wonderland residents
- Parking available for selected apartments
- Two-passenger lifts in each core

## Unique inclusions

- 5-star Green Star-compliant appliances: refrigerator, washing machine, clothes dryer (or combined washer/dryer), microwave, oven (or combination micro/oven), cooktop, dishwasher and ducted rangehood
- All apartments include a basement storage cage on title, sized to allow for bicycle storage
- Ducted day/night zoned air-conditioning for heating and cooling

## Interior material specifications

### Bedroom features

- Plush pile wool-blend carpet
- Robes with polyurethane doors, parcel shelf and hanging rail

### Kitchen features

- Engineered timber floor boards or vitrified rectified floor tiles (subject to scheme)

- Combination of textured melamine and polyurethane cupboards (varies with floor plan)
- Soft-close cupboards and drawers
- Kitchen appliances, including integrated dishdrawers and refrigerators
- Induction cooktops and electric cooktops for dual-key studios
- Ducted exhaust
- Mirror splashback

### Bathroom features

- Solid surface vanities
- Storage with mirror and textured melamine doors
- Tiled shower
- Concealed cistern
- Wall-hung basin
- Ducted exhaust

### Living, dining and hallway features

- Engineered timber floor boards or vitrified rectified floor tiles (subject to scheme)
- Painted timber skirting throughout

### Balcony features

- Tiled floor finish
- Sliding glass doors (as indicated on floor plan)
- Bi-fold, sliding or fixed screens (as indicated on floor plan)

### Laundry features

- Washing machine, dryer (selected apartments have combined washer/dryers), laundry tub
- Ducted exhaust

## Technical specifications

### Security

- Key access to apartments
- Secure building with security fob access into the Entry Lobby and lift access to apartment levels

### 12-hour concierge service

- CCTV system with on-site recording
- Video intercom
- Off-site monitored fire system

### Lighting

- LED downlights to bedrooms
- LED downlights to living and dining areas
- LED downlights to hallways and bathrooms
- Undermount LED lighting to kitchen benchtop and bathroom vanity
- Wall-mounted fittings to balcony

### In-home display screens

- Integrated in-home display 7" touch screens to control air-conditioning, intercom and integrated smart-meter energy management information to promote low-energy living. Screens can also be used for communication with concierge and to display building notifications.

### Telecommunication

- Data/phone points in living room, bedrooms and study
- High-speed optic fibre internet ready

### MATV/PAY TV

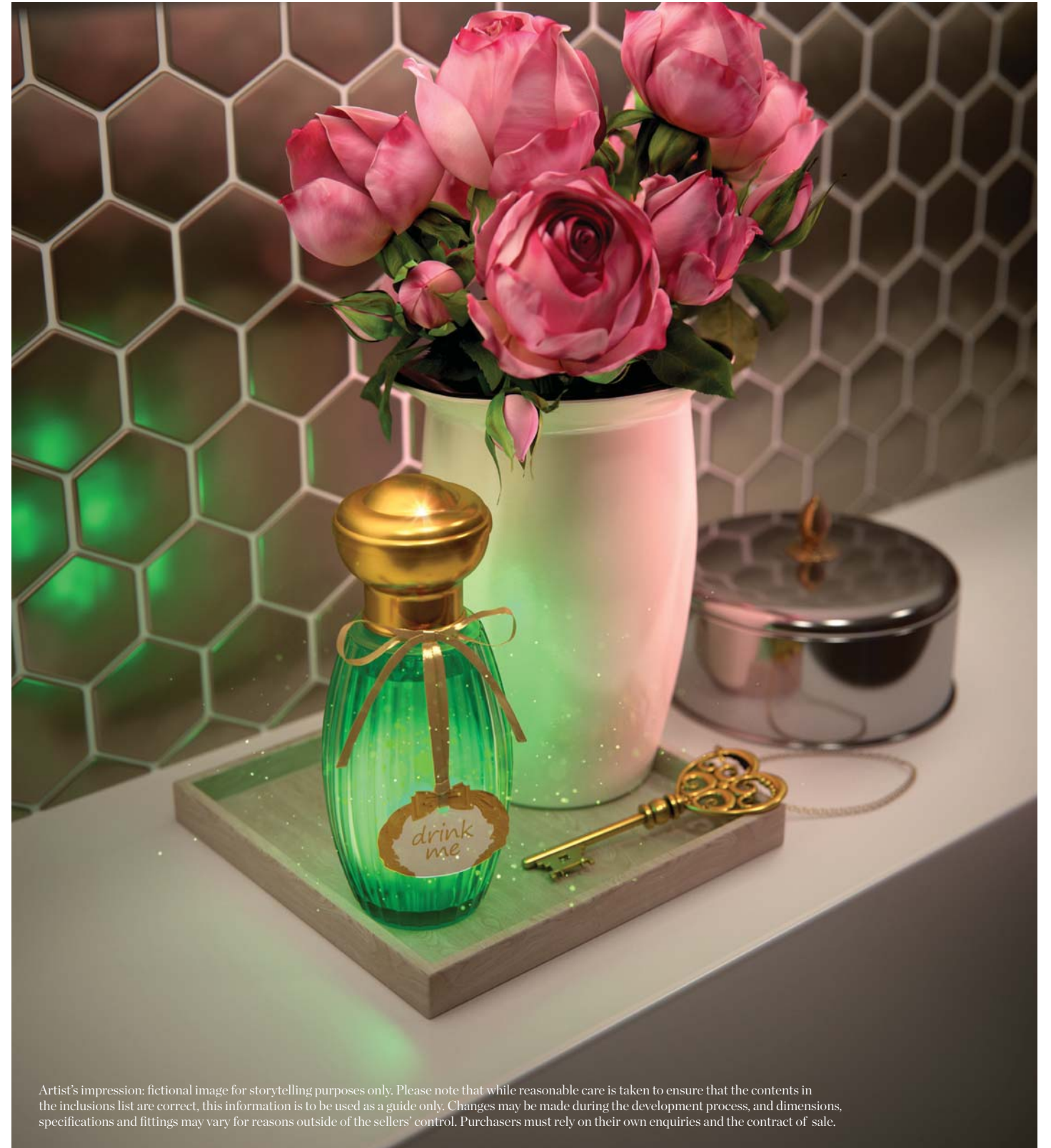
- Pay TV ready
- Free-to-air aerial connections in all bedrooms and living room

### Waste

- Garbage chute located on each floor

## Environmental specifications

- Targeting 5-star Green Star rating from the Green Building Council of Australia
- Recycled wastewater system for use in clothes washing; car washing; toilet and urinal flushing; landscape and any other non-potable uses
- Connected to Central Park's on-site central thermal plant and tri-generation facility which supplies efficient, low-emission domestic hot water and thermal energy for heating and cooling
- Sub-metering for all major water and electricity uses within the precinct
- Smart metering for energy and water, providing a visual display of real-time usage; data analysis at regular intervals (i.e. daily, weekly, monthly); and a function that presents the financial costs and greenhouse gas emissions associated with the usage.
- Low VOC paints, adhesive and sealants
- Water- and energy-efficient fixtures and appliances



Artist's impression: fictional image for storytelling purposes only. Please note that while reasonable care is taken to ensure that the contents in the inclusions list are correct, this information is to be used as a guide only. Changes may be made during the development process, and dimensions, specifications and fittings may vary for reasons outside of the sellers' control. Purchasers must rely on their own enquiries and the contract of sale.